

MADE IN ITALY. MADE TO EXCEL.

RAW



Since its founding in 1891, Acme Brick has continually advanced the art and science of providing affordable, sustainable, enduring, and beautiful product choices for America's homeowners, builders, contractors, institutions, and businesses.

Acme Brick Tile & Stone traces its roots back to 1964 and is a leader in providing builders, architects, designers, and contractors with a wide range of excellent products. At more than 50 locations across 13 states, Acme Brick Tile & Stone, offers distinctive products of superior quality, sourced from around the world and delivered with impeccable service – and at many locations, in-house design assistance. Our customers include builders, architects, designers, contractors, and DIY homeowners.

In ways large and small, Acme Brick associates work hard to provide building materials that are as good for the environment as it is for the people who build with it.



WWW.BRICK.COM

CONCRETE LOOK

COLOURED BODY
PORCELAIN TILES

WHITE-BODY
WALL TILES



RAW

Witness
of life

INTERIOR
& EXTERIOR SPACES
Porcelain Tiles

20

BATHROOMS
& WELLNESS
Wall Tiles

58

TECHNICAL
FEATURES

110

Porcelain and wall tiles: a safe choice



● IT DOES NOT BURN

● RECYCLABLE

● HYGIENIC

● VERSATILE

● IT LOVES THE ENVIRONMENT

● LONG LASTING

● SAFE

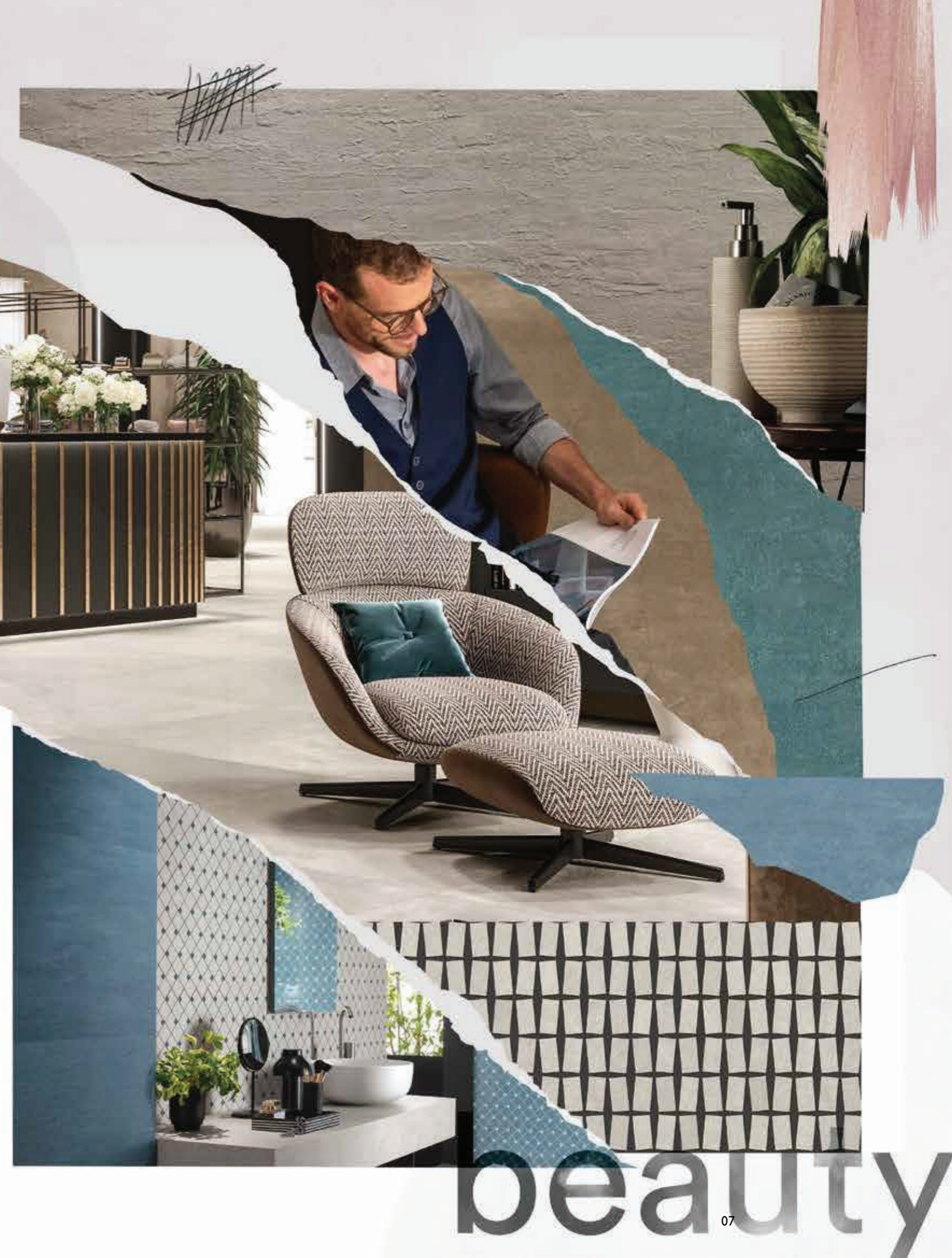
● RESISTANT

● ZERO PVC

● ZERO VOCS

Witness of life

The passage of time leaves behind layers of history that take on a high aesthetic value for interior design. Raw recreates the earthiness of time-worn surfaces and reproduces the effects of peeling plaster in a perfect balance between past and present, filling rooms with authenticity while rediscovering a surprising contemporary feel. Raw goes beyond the usual association of peeling surfaces and walls, proposing a plaster effect also for floors.





The layered patina of time

Raw interprets plaster as a layered material, an overlapping of glazes, patinas, drips, and ripples. The action of time alters the original color and generates sharp changes in tone that open up on the surface like glimpses of the past. Everything that has altered the material over its history is preserved, esthetically elaborated and recreated in the best porcelain tiles.

Enchanting imperfection

Raw represents much more than a time-worn plaster: it is a complete reworking of the unique effect of the passage of time on objects, furnishings, and surfaces. With its elegant, industrial look, Raw creates the perfect setting for an eclectic mix of furnishings and accessories in delabr  style. Any imperfection in the original material is a precious element to define the space's unique, unconventional spirit.





PORCELAIN TILES



White



Pearl



Sand



Mud

WALL TILES



White



Pearl



Sand

Marked shades and peeling

- 120x278cm / ±6mm
 - 120x120cm / ±9mm
 - 75x150cm / ±9,5mm
 - 75x75cm / ±9,5mm
 - 37,5x75cm / ±9,5mm
 - 50x110cm / ±8,5mm
 - 60x60cm / ±9mm
 - 30x60cm / ±9mm
 - 120x120cm / ±20mm*
 - 60x120cm / ±20mm*
- * Outdoor paving



Warm, earthy colors like Sand and Mud are joined by cooler tones like White and Pearl. Four colors of porcelain tiles that can be combined to reflect all the shades of plaster and the signs of aging over time. A wide range of sizes for horizontal and vertical surfaces both indoor and out allows the unlimited design of any type of public or private space.



A delicate spatula effect

50x110 cm



WALL TILES



Blue



Rose



Petroleum

3D SCRATCH



White



Pearl



Blue



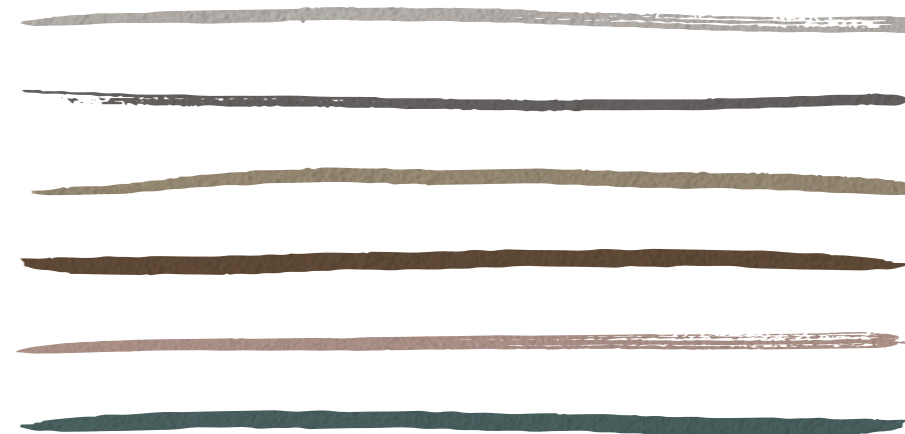
Petroleum

Compared to the porcelain floor tiles, the graphics of the wall tiles are more subtle and directed. A delicate spatula effect that can be seen in the filigree orients the plaster longitudinally and conveys the perception of a "soft wall." In addition to the neutral tones there are three new elegant colors for striking wall solutions. The 3D Scratch relief features the strong, palpable effect of peeling and dripping plaster.



Decorations designed for full customization

ADDING A TOUCH OF COLOR
WITH GROUTING



Grouting the joints is no longer just a functional necessity but becomes an integral part of the decoration. The possibility of choosing the most suitable grout for the design for Twist, Flag, Block and Castle sets a new standard when it comes to personalization.

The collection is completed by an original range of decorations that enhances the most contemporary and trendy designs. Porcelain floor and wall mosaics with tiles of different shapes and sizes breathe life into unique geometries, enhanced by colored joints to decorate with creativity.



Interior & exterior spaces

PORCELAIN TILES
FROM PAGE 20

WALL TILES
FROM PAGE 58

Bathrooms & wellness

LIVING LOFT



CONCEPT
STORE



RESTAURANT
RESTROOM

HOME SPA



RESTAURANT



IN & OUT VILLA
20



RESIDENTIAL
BATHROOM

VILLA
BATHROOM



Tales of contemporary living

LIVING LOFT

A metropolitan loft in a recovered space characterized by vaults, exposed beams, and unconventional furnishing elements that bring out the timeless character of the architecture. Warm and earthy, porcelain tiles with a peeling plaster effect offer tactile and colorful suggestions that reveal the enticing side of lived-in spaces.









THE FLAG MOSAIC PLAYS WITH THE CONTRASTING COLOR OF THE JOINT TO HIGHLIGHT ITS TRIANGULAR MODULARITY.



THESE MOSAICS ALLOW YOU TO CUSTOMIZE A WALL BY CHOOSING THE COLOR OF THE GROUT DURING THE LAYING PHASE. THE COLORS PRESENTED IN THESE PAGES ARE MOOD SUGGESTIONS AND PURELY INDICATIVE.



My choices

PORCELAIN TILES

Sand
Matte
75x150 cm | 29 1/2" x 59"

Blaze Iron
Matte
75x150 cm | 29 1/2" x 59"

Sand
Grip
37,5x75 cm | 14 3/4" x 29 1/2"

WALL TILE DECORS

Sand Mosaico Flag
31,1x31,6 cm | 12 1/4" x 12 1/2"

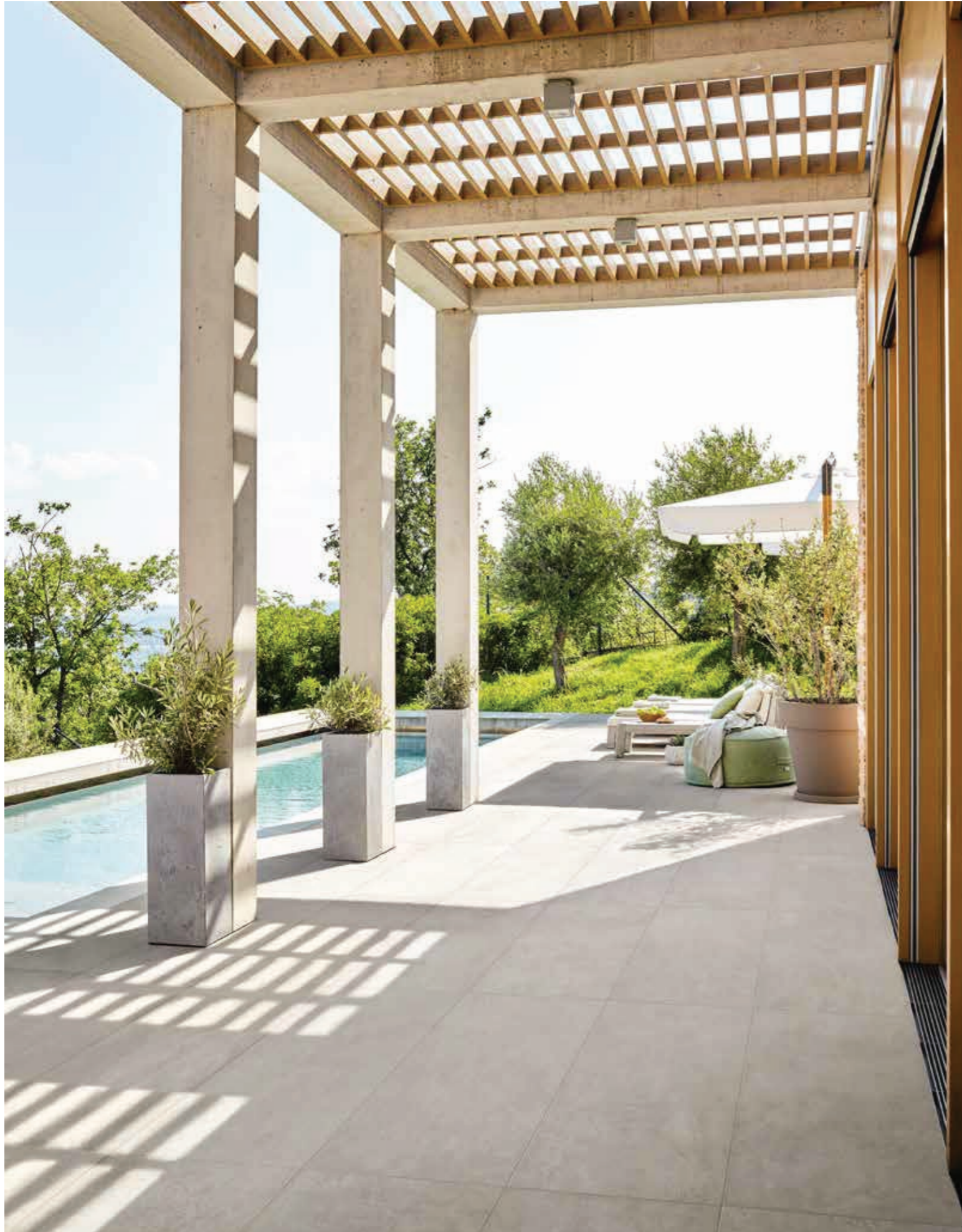
Straight lines and peeling surfaces

IN&OUT VILLA

A modern villa with clean geometries that opens up to welcome the beauty of the surrounding landscape. The plaster effect lends itself to suggestive combinations with both metal and wood. The rich texture of the outdoor slabs visible in the changing light of the day reveals the full potential of the collection.







THICK PORCELAIN SLABS ARE IDEAL FOR FLOORING TERRACES, POOL-SIDES, AND WALKWAYS: EXTREMELY DURABLE AND FROST-RESISTANT, THE BEAUTY OF THEIR COLORS DON'T CHANGE OVER TIME.



PORCELAIN TILES MEET THE CRITERIA OF SUSTAINABLE ARCHITECTURE THANKS TO THEIR ENERGY EFFICIENCY AND USE OF RECYCLED MATERIALS.





My choices

PORCELAIN TILES

White
Matte
120x278 cm | 47¹/₄"x109¹/₂"

Pearl
Matte
120x120 cm | 47¹/₄"x47¹/₄"

Blaze Iron
Matte
75x150 cm | 29¹/₂"x59"

Exence Almond
Matte
18,5x150 cm | 7¹/₄"x59"

White
Outdoor Paving ± 20 mm
120x120 cm | 47¹/₄"x47¹/₄"

Pearl
Outdoor Paving ± 20 mm
60x120 cm | 23⁵/₈"x47¹/₄"

PORCELAIN TRIM TILES

White Round
Outdoor Paving ± 20 mm
33x120 cm | 13"x47¹/₄"

White Round Angolare Dx/Sx
Outdoor Paving ± 20 mm
33x120 cm | 13"x47¹/₄"

A layered, evocative space

CONCEPT STORE

A commercial space where ceramic surfaces and furnishings converge on a composed elegance based on a fusion of colors, textures, and shapes. Thanks to porcelain tiles with a peeled plaster effect, the imposing columns are much more than simple structural elements, suggesting an industrial past.





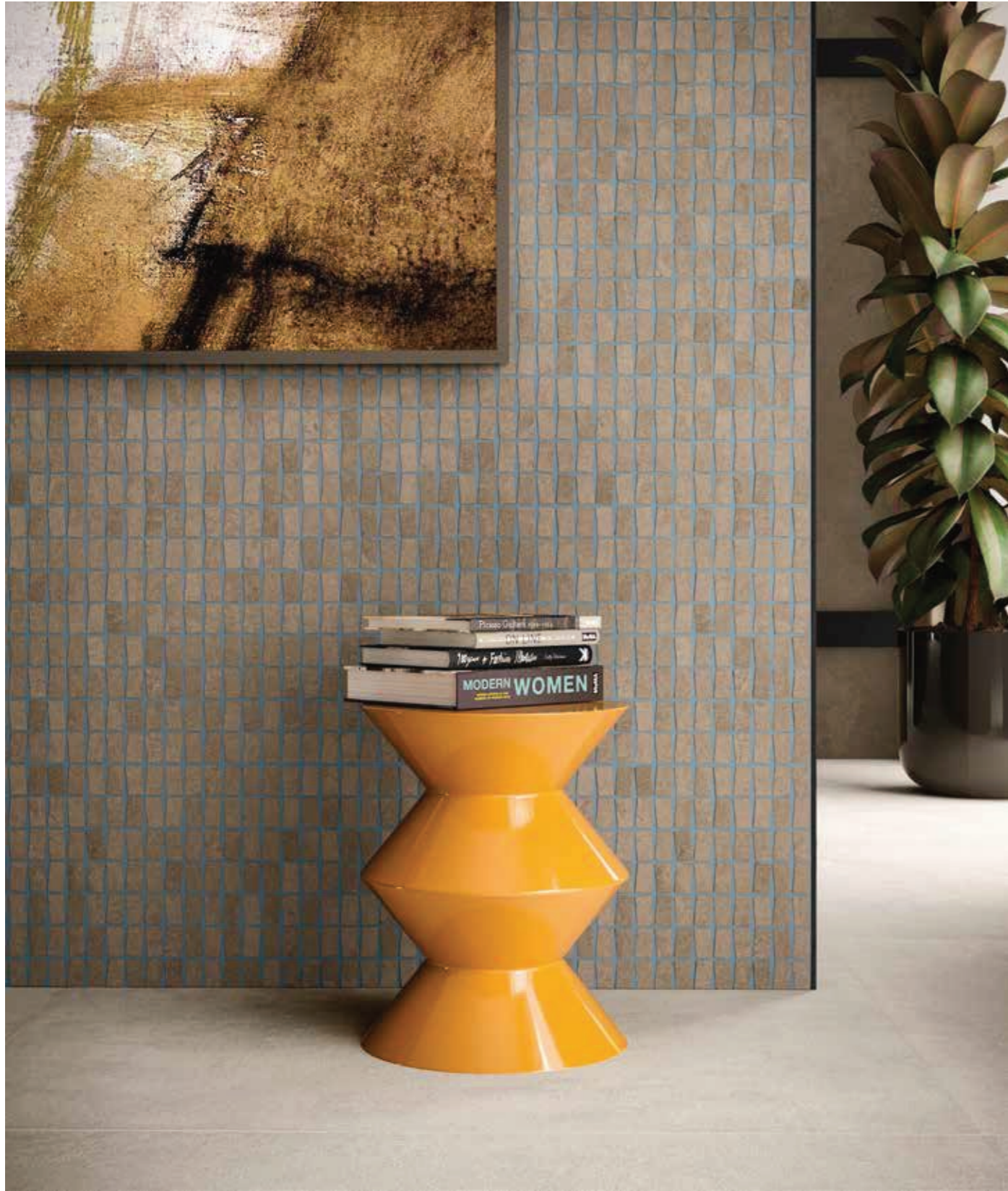


THESE MOSAICS ALLOW YOU TO CUSTOMIZE A WALL BY CHOOSING THE COLOR OF THE GROUT DURING THE LAYING PHASE. THE COLORS PRESENTED IN THESE PAGES ARE MOOD SUGGESTIONS AND PURELY INDICATIVE.

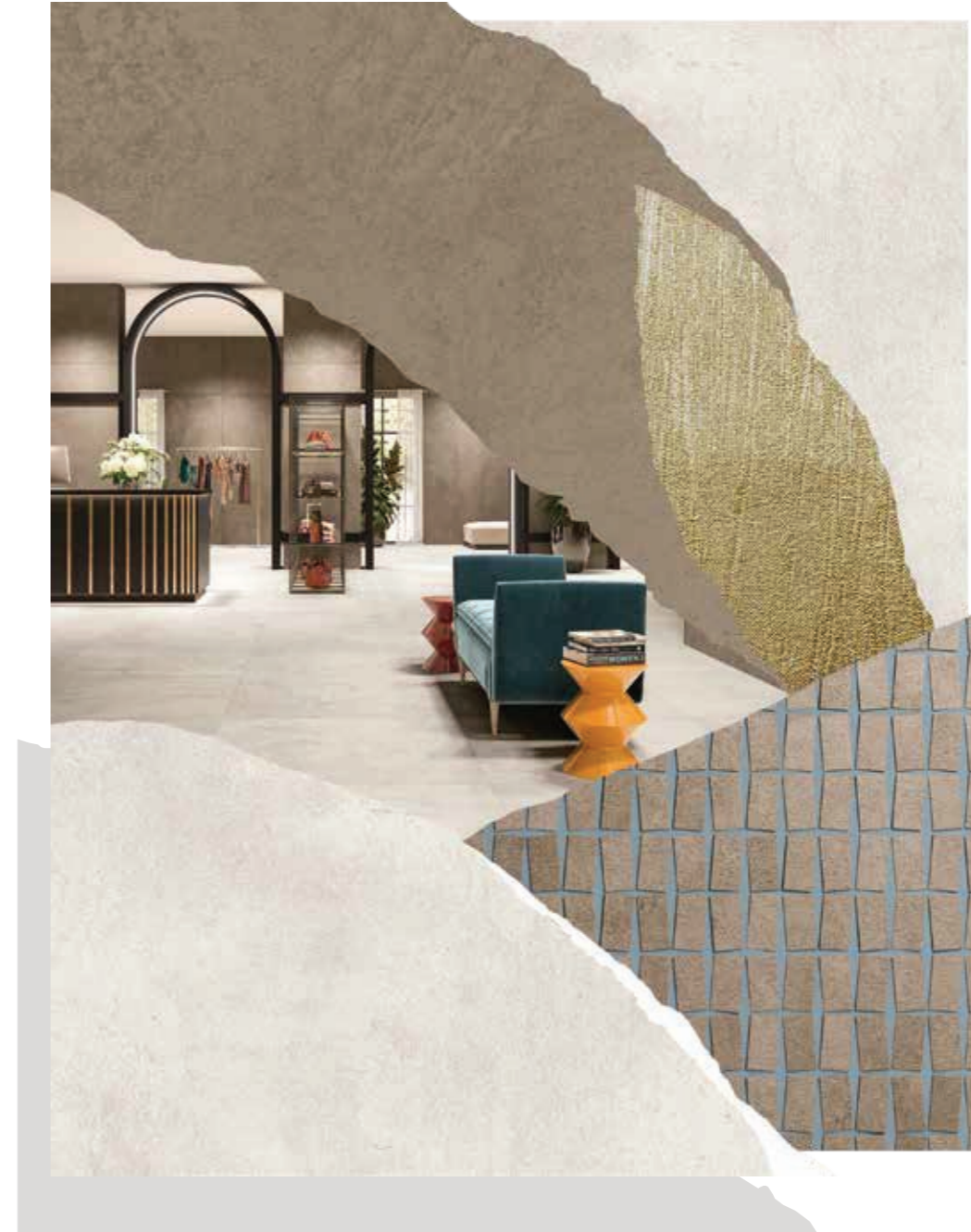




WHITE MEETS THE WARM,
EARTHY LOOK OF MUD IN AN
ELEGANT COUNTERPOINT
THAT HIGHLIGHTS THE INFINITE
VISUAL CUES OF THE LAYERED
PLASTER SURFACES.



WITH THE CASTLE MOSAIC THE JOINT IS NO LONGER JUST A FUNCTIONAL ELEMENT BUT RATHER BECOMES AN IMPORTANT ESTHETIC FACTOR THAT COMPLETES AND ENHANCES THE GEOMETRY OF THE DECORATION.



My choices

PORCELAIN TILES

White
Matte
120x120 cm | 47¹/₄"x47¹/₄"

Mud
Matte
120x278 cm | 47¹/₄"x109¹/₂"

PORCELAIN TILE DECORS

Mud Mosaico Castle ± 6 mm
29x29,2 cm | 11³/₈"x11³/₈"

A space in constant renewal

RESTAURANT

A restaurant opens to the public in a historic building with many past lives, all still visible in minimal traces. With its textured plaster effect, Raw celebrates the marks left by time not only on walls and structures but also on the floor.







A WELCOMING, TIMELESS ENVIRONMENT THAT THE PEELING AND IMPERFECTIONS OF THE PLASTER EFFECT OPEN UP TO CONTINUOUS BLENDING AND REGENERATION.





THE LARGE PORCELAIN
TILE SIZES FORM LARGE,
CONTINUOUS BACKDROPS
THAT REINFORCE THE
COLLECTION'S
DÉLABRÉ STYLE.



My choices

PORCELAIN TILES

Mud
Matte
120x120 cm | 47¹/₄"x47¹/₄"

White
Matte
120x278 cm | 47¹/₄"x109¹/₂"

Atlas Plan
Calacatta Imperiale
Lappato Lux
162x324 cm | 63³/₄"x127¹/₂"

PORCELAIN TRIM TILES

Mud Scalino
33x120 cm | 13"x47¹/₄"



Bathrooms & wellness

WALL TILES

Restaurant restroom ⁶⁰

Residential bathroom ⁷⁰

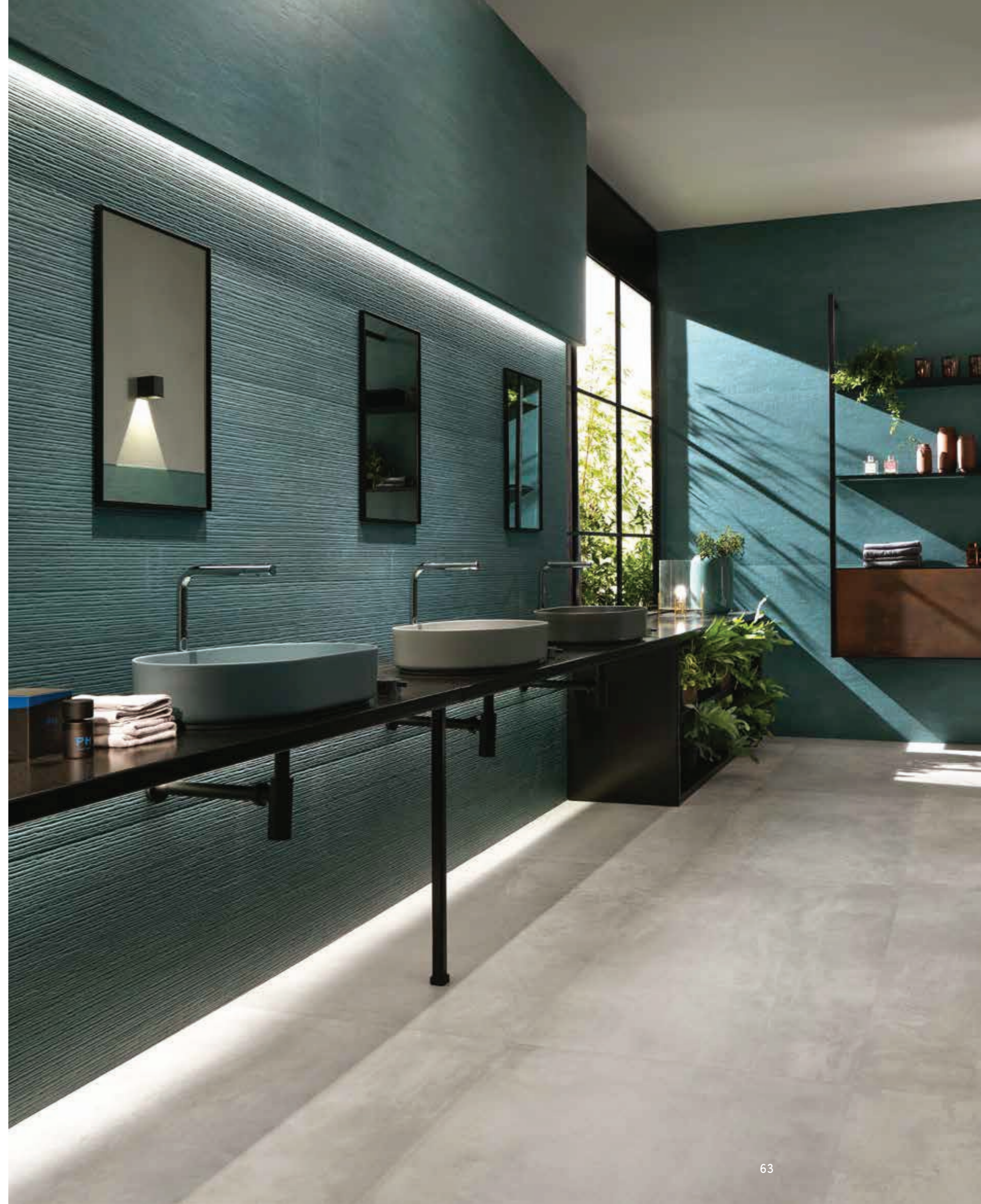
Villa bathroom ⁸⁰

Home spa ⁹²

A refined blend of colors

RESTAURANT RESTROOM

Raw features a time-worn plaster effect in original colors, like the intense green of Petroleum. The richness of the ceramic surface and the layered variety of the graphic give a hotel bathroom a unique, distinctive ambiance.





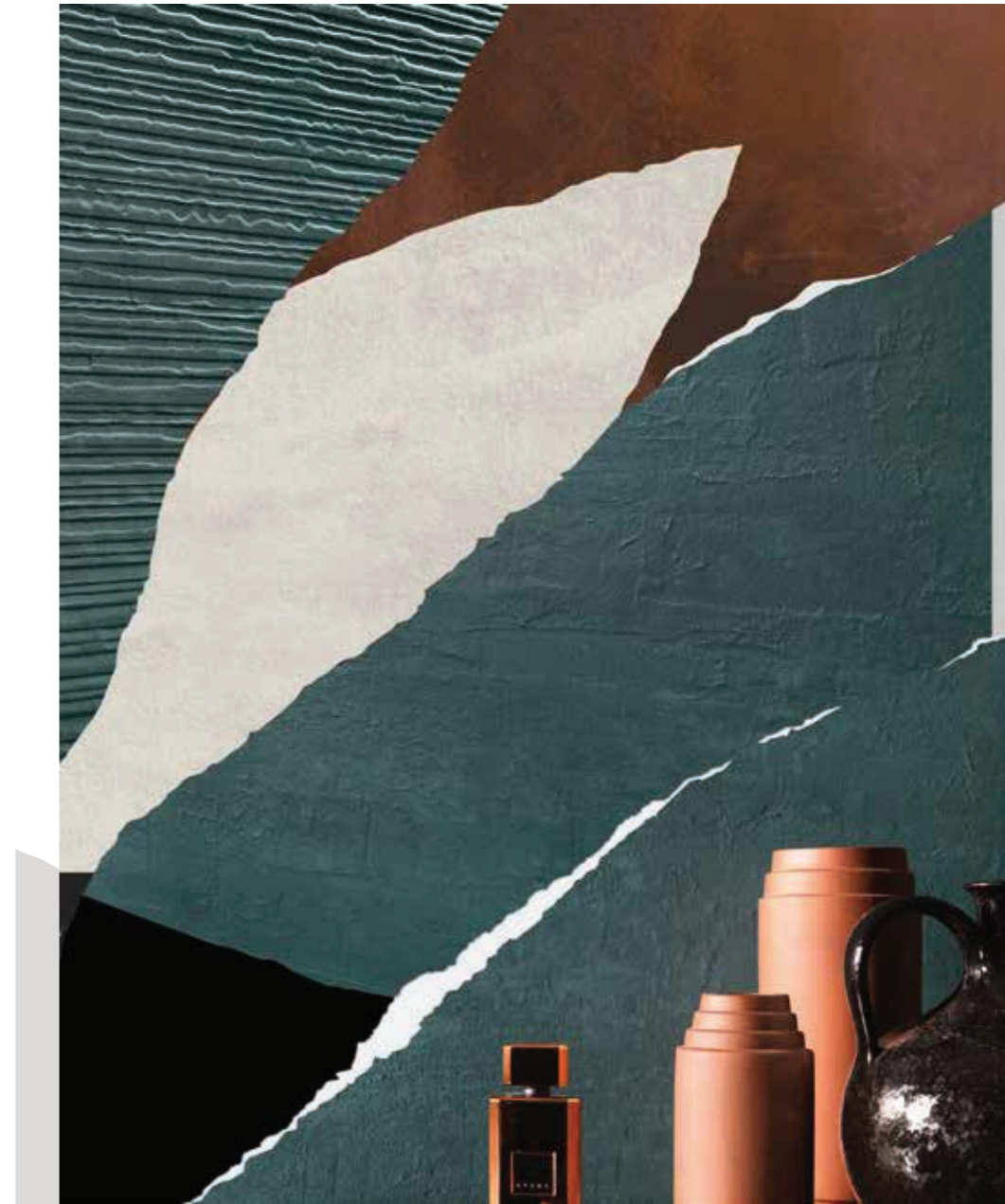


THE WHITE BODY WALL TILES
FEATURE SOFT, SCULPTED
GRAPHICS WITH SPATULA
MARKS THAT RECALL A CANVAS
PAINTED BY AN ARTIST.





THE PEELING ON SCRATCH
IS PARTICULARLY EVIDENT
WHEN LIT FROM THE
SIDE, EMPHASIZING THE
COLLECTION'S EARTHY SPIRIT.



My choices

WALL TILES

Petroleum
50x110 cm | 19⁵/₈"x43¹/₄"

3D Scratch Petroleum
50x110 cm | 19⁵/₈"x43¹/₄"

WALL TRIM TILES

Petroleum Corner
1,4x50 cm | 5⁵/₈"x19⁵/₈"

Petroleum Corner A.E.
1,4x1,4 cm | 5⁵/₈"x5⁵/₈"

Petroleum
3D Scratch Corner
1,4x50 cm | 5⁵/₈"x19⁵/₈"

PORCELAIN TILES

Pearl
Matte
75x150 cm | 29¹/₂"x59"

Blaze Corten
Matte
75x150 cm | 29¹/₂"x59"

Details with a refined imperfection

RESIDENTIAL BATHROOM

The extraordinary balance of Rose and Pearl outlines the warm and welcoming personality of a home bathroom, embellished with elegant graphic mosaic inserts. The aged plaster effect suggests echoes of the past that colors, architecture, and furnishings reinvent in full expressive freedom.





IN COMBINATION WITH THE BRIGHT PEARL GRAY OF THE FLOOR, ANTIQUE PINK IS ONE OF THE ORIGINAL COLORS USED IN THE WALL TILES.





THANKS TO THE PURELY GRAPHIC TEXTURE AND THE CONTRASTING COLOR OF THE JOINT, THE MOSAIC INSERTS ON THE WALL OFFER IMMENSE CREATIVE FREEDOM.





My choices

WALL TILES

Rose
50x110 cm | 19⁵/₈"x43¹/₄"

Pearl
50x110 cm | 19⁵/₈"x43¹/₄"

WALL TILE DECORS

Pearl Mosaico Twist
35,8x31 cm | 14¹/₈"x12¹/₄"

Rose Mosaico Twist
35,8x31 cm | 14¹/₈"x12¹/₄"

WALL TRIM TILES

Rose Corner
1,4x50 cm | 5⁵/₈"x19⁵/₈"

PORCELAIN TILES

Pearl
Matte
75x150 cm | 29¹/₂"x59"

Delicately contrasting colors

VILLA BATHROOM

A bathroom where walls, volumes, and niches are both decorative and functional. Pearl and Blue adorn the space with elegance in discreet, contrasting tones that reveal all the collection's graphic richness.





THE REALISM OF THE WALL
TILES' PLASTER LOOK IS
SURPRISING, ESPECIALLY IN
THE NEW COLORS.





THE CHOICE OF A COLORED
GROUT THAT RECALLS THE
TONES OF THE ENVIRONMENT
ENHANCES THE DESIGN OF
THE BLOCK MOSAIC.



THESE MOSAICS ALLOW YOU TO CUSTOMIZE A WALL BY CHOOSING THE COLOR OF THE GROUT DURING THE LAYING PHASE. THE COLORS PRESENTED IN THESE PAGES ARE MOOD SUGGESTIONS AND PURELY INDICATIVE.

THE PORCELAIN TILE WASHBASIN COMBINES THE LOOK OF THE PLASTER EFFECT WITH THE GUARANTEE OF AN UNALTERABLE SURFACE.



BLUE GOLD 50x110 cm



CONTAINS GOLD. THE USE OF A COMMON MILD DETERGENT IS RECOMMENDED. AVOID USING ACIDIC OR ALKALINE PRODUCTS, WAXES, STEEL WOOL, OR ABRASIVES.





My choices

WALL TILES

Blue
50x110 cm | 19⁵/₈"x43¹/₄"

Pearl
50x110 cm | 19⁵/₈"x43¹/₄"

WALL TILE DECORS

Blue Mosaico Block
28x28 cm | 11"x11"

Pearl Mosaico Block
28x28 cm | 11"x11"

WALL TRIM TILES

Blue Corner
1,4x50 cm | 5⁵/₈"x19⁵/₈"

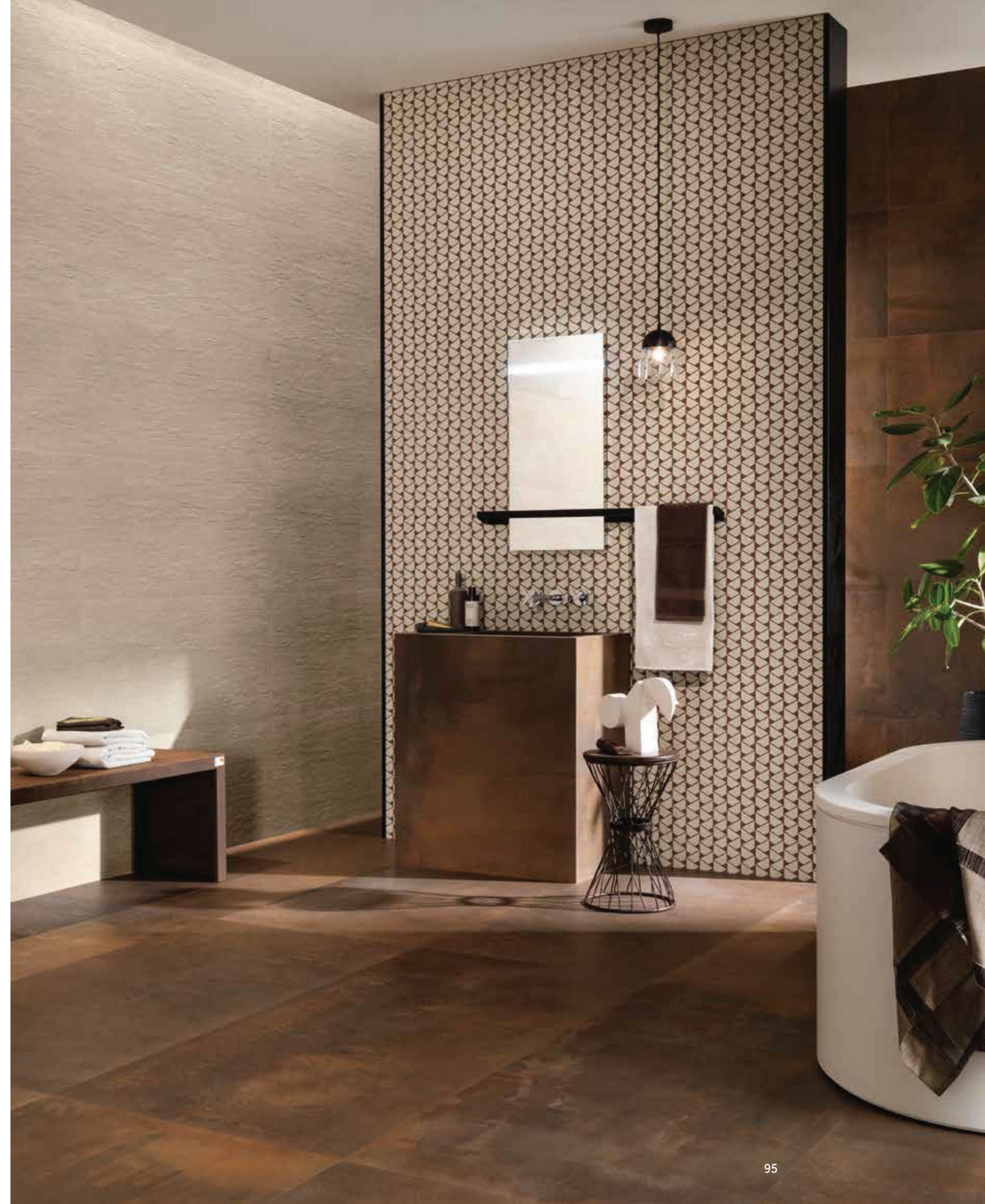
PORCELAIN TILES

Pearl
Matte
75x150 cm | 29¹/₂"x59"

A strong industrial character

HOME SPA

Raw finds a perfect balance with the metal look, with which it shares an industrial matrix. An interesting mix to view in its entirety for a bathroom whose quality is the result of a set of surfaces, finishes, and furnishings in perfect délabré style.



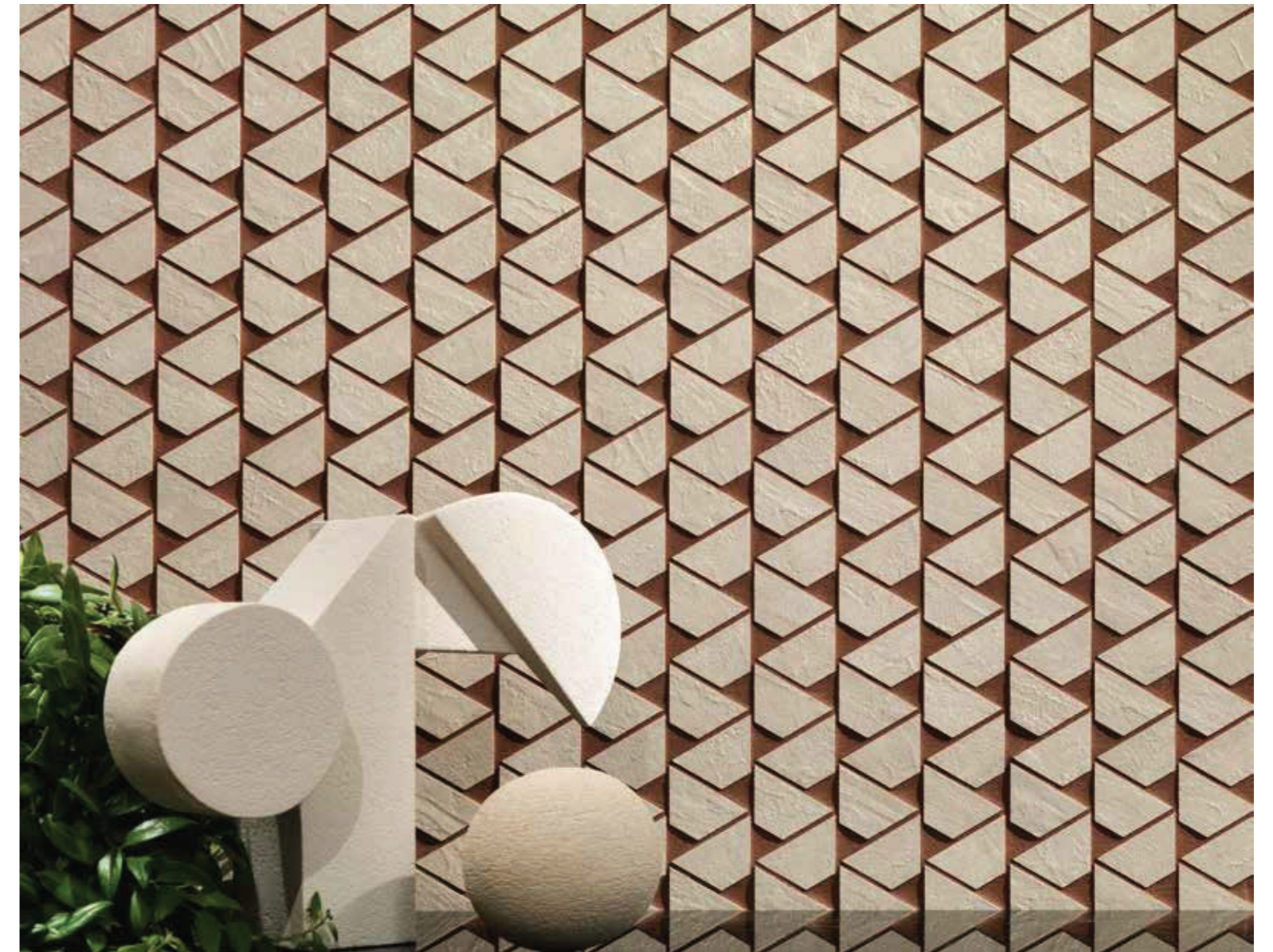


THE EVOLUTION OF SURFACES
OVER TIME BECOMES A
TREND IN INTERIOR DESIGN,
FOR SPACES WITH A STRONG
INDUSTRIAL SPIRIT.





IN ADDITION TO THE FOLDED RIBBON MOTIF, THE APPEARANCE OF THE FLAG MOSAIC IS ALSO A RESULT OF THE GROUT USED, WHETHER CONTRASTING OR TONE-ON-TONE.



THESE MOSAICS ALLOW YOU TO CUSTOMIZE A WALL BY CHOOSING THE COLOR OF THE GROUT DURING THE LAYING PHASE. THE COLORS PRESENTED IN THESE PAGES ARE MOOD SUGGESTIONS AND PURELY INDICATIVE.



My choices

WALL TILES

Sand
50x110 cm | 19⁵/₈"x43¹/₄"

Blaze Corten
50x110 cm | 19⁵/₈"x43¹/₄"

WALL TILE DECORS

Sand Mosaico Flag
31,1x31,6 cm | 12¹/₄"x12¹/₂"

WALL TRIM TILES

Sand Corner
1,4x50 cm | 5⁵/₈"x19⁵/₈"

PORCELAIN TILES

Blaze Corten
Matte
75x150 cm | 29¹/₂"x59"

SOFT ATTITUDE



PERFECT BALANCE

Adding a touch of color with grouting

PORCELAIN & WALL TILE DECORS

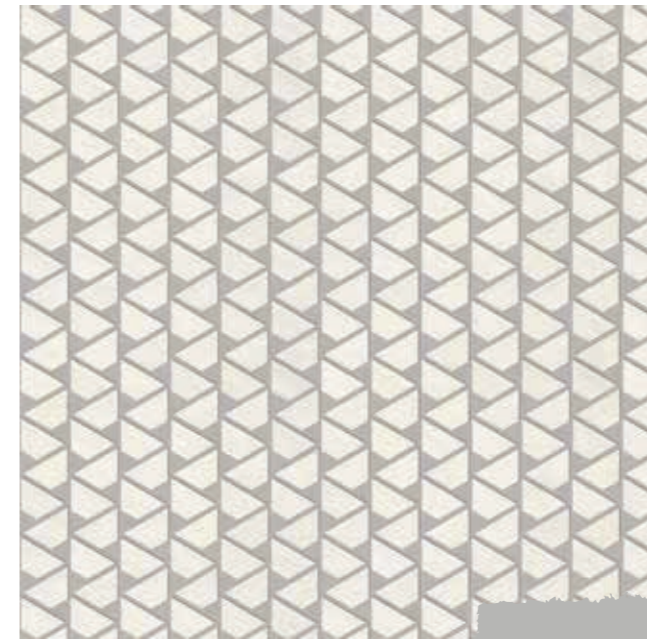
COLORS MATCH





Soft attitude

WALL TILE DECOR ± 8,5 mm
White Mosaico Flag *



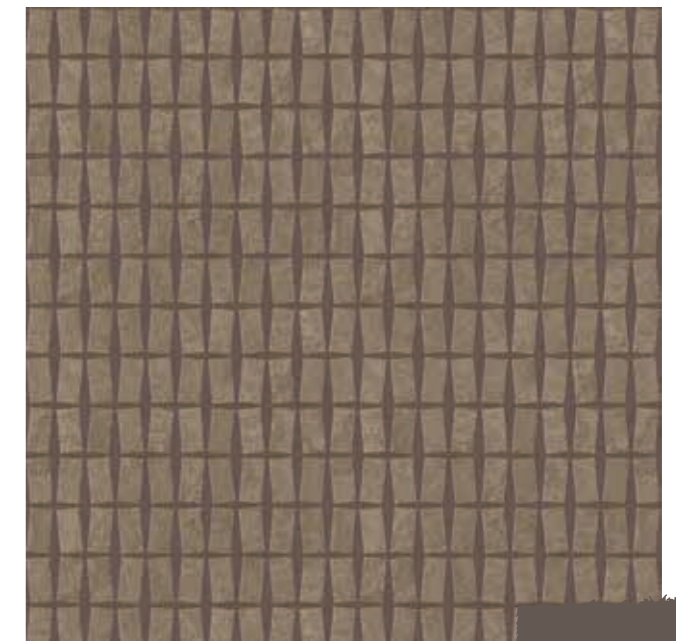
WALL TILE DECOR ± 8,5 mm
Pearl Mosaico Twist *



WALL TILE DECOR ± 8,5 mm
Sand Mosaico Block *



PORCELAIN TILE DECOR ± 6 mm
Mud Mosaico Castle *



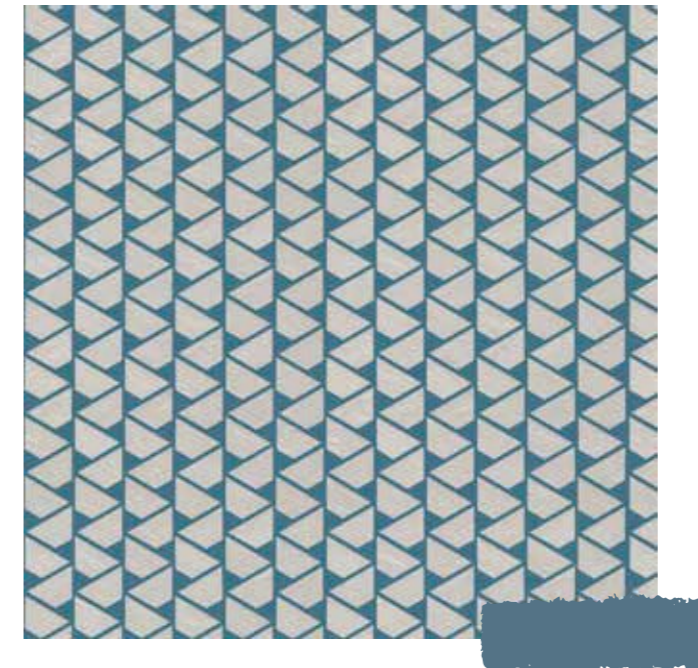
* These mosaics allow you to customize a wall by choosing the color of the grout during the laying phase. The colors presented in these pages are mood suggestions and purely indicative.

* For the best performance of the mosaic we recommend the use of epoxy mortars (class RG - EN 13888/ISO 13007) or decorative resins-cement, following the manufacturer's instructions.

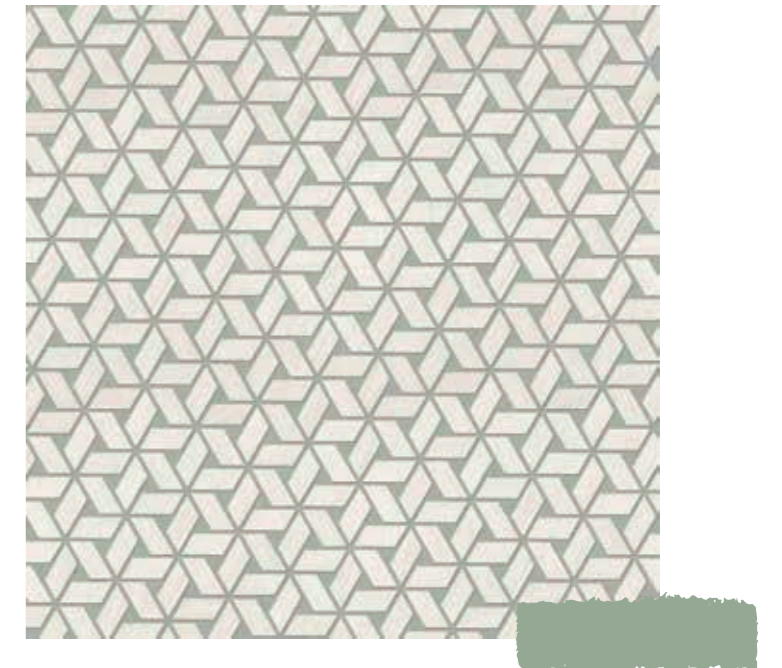


Perfect balance

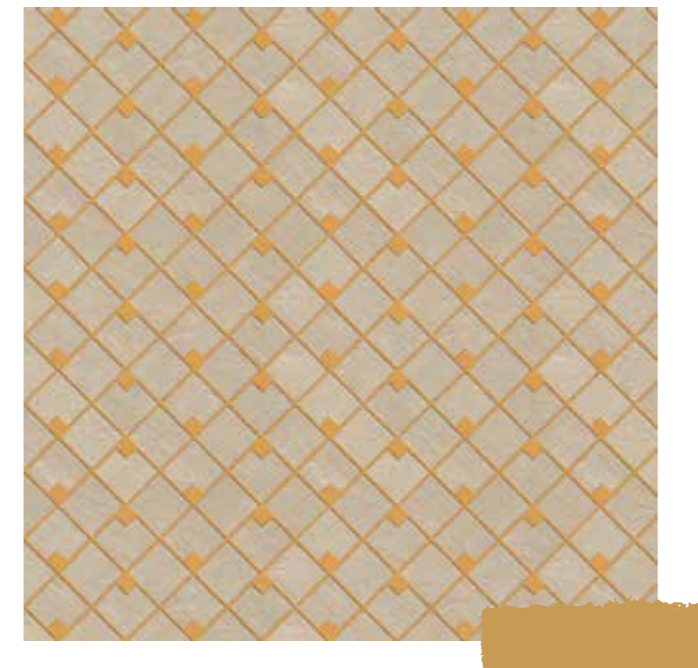
WALL TILE DECOR ± 8,5 mm
Pearl Mosaico Flag *



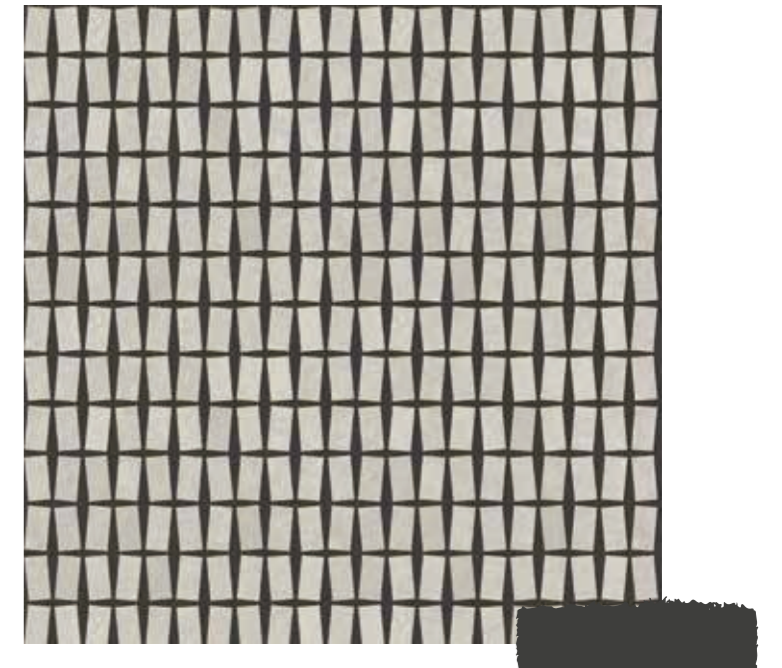
WALL TILE DECOR ± 8,5 mm
White Mosaico Twist *



WALL TILE DECOR ± 8,5 mm
Sand Mosaico Block *



PORCELAIN TILE DECOR ± 6 mm
Pearl Mosaico Castle *



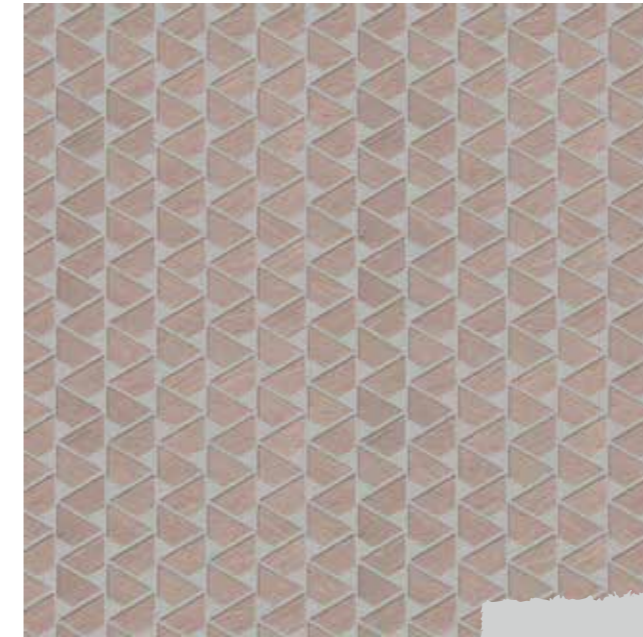
* These mosaics allow you to customize a wall by choosing the color of the grout during the laying phase. The colors presented in these pages are mood suggestions and purely indicative.

* For the best performance of the mosaic we recommend the use of epoxy mortars (class RG - EN 13888/ISO 13007) or decorative resins-cement, following the manufacturer's instructions.

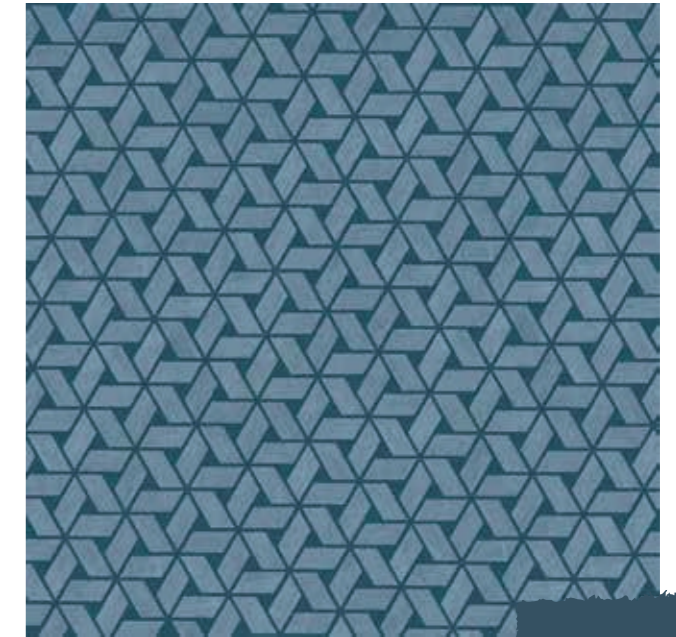


Matching colors

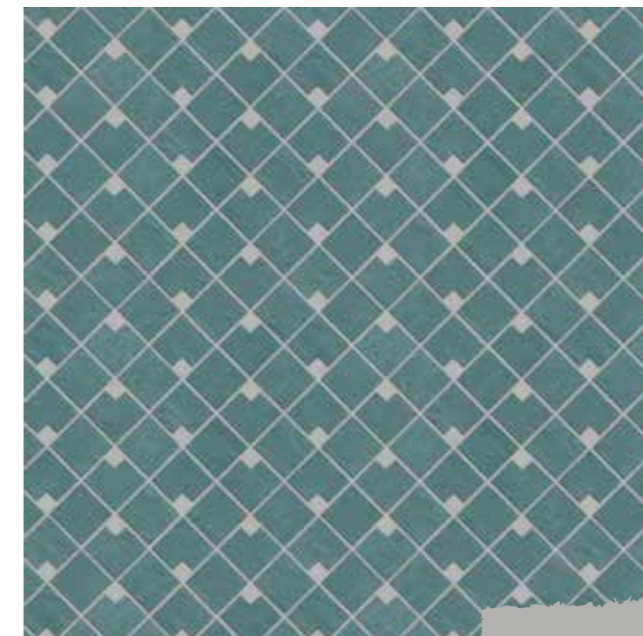
WALL TILE DECOR ± 8,5 mm
Rose Mosaico Flag *



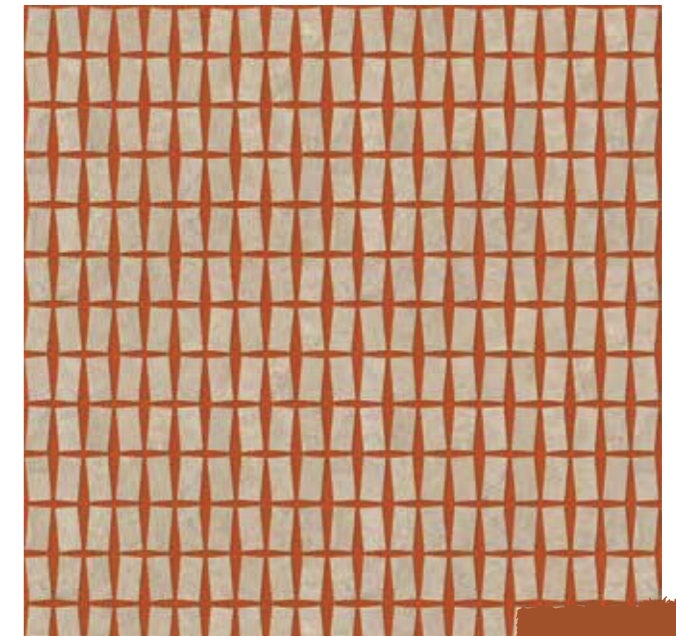
WALL TILE DECOR ± 8,5 mm
Blue Mosaico Twist *



WALL TILE DECOR ± 8,5 mm
Petroleum Mosaico Block *



PORCELAIN TILE DECOR ± 6 mm
Sand Mosaico Castle *

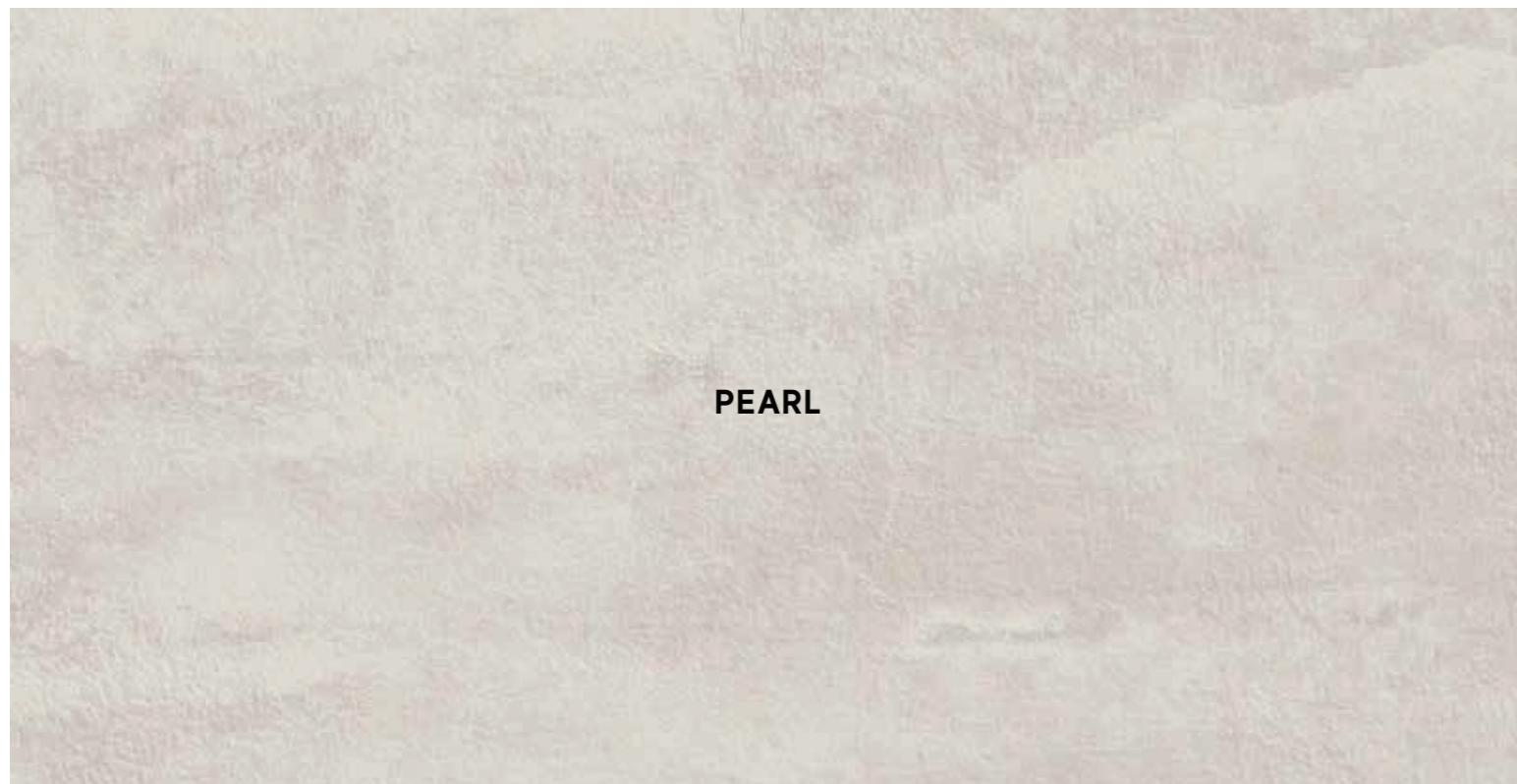
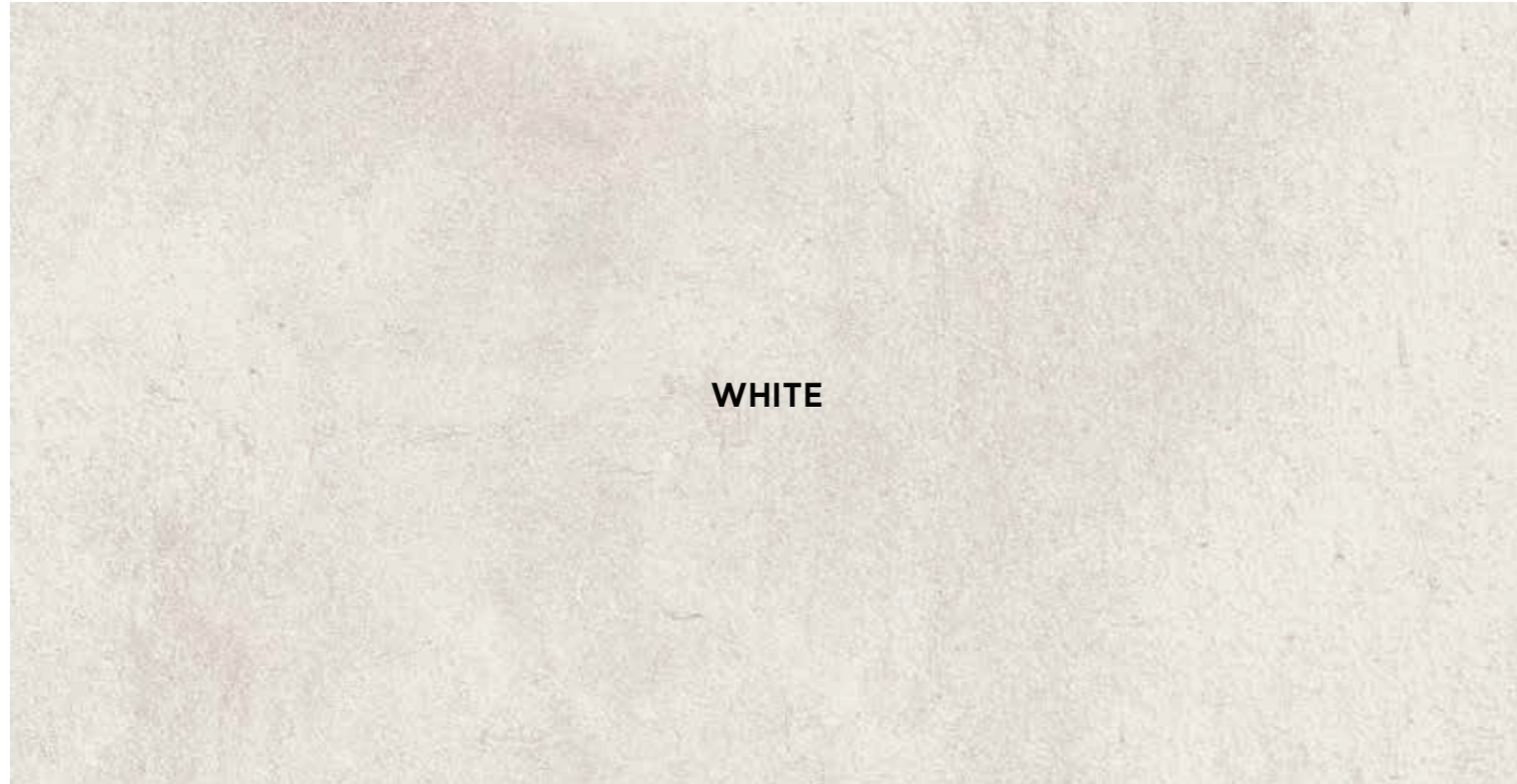


* These mosaics allow you to customize a wall by choosing the color of the grout during the laying phase. The colors presented in these pages are mood suggestions and purely indicative.

* For the best performance of the mosaic we recommend the use of epoxy mortars (class RG - EN 13888/ISO 13007) or decorative resins-cement, following the manufacturer's instructions.

RAW

Porcelain tile color range





Porcelain tiles \pm 20 mm

RAW Porcelain tiles

COLOURED BODY PORCELAIN TILES - RECTIFIED MONOCALIBER

Sizes and surfaces

MATTE

120x278 cm - 47 ¹ / ₄ "x109 ¹ / ₂ "	\pm 6 mm
120x120 cm - 47 ¹ / ₄ "x47 ¹ / ₄ "	\pm 9 mm
75x150 cm - 29 ¹ / ₂ "x59"	\pm 9,5 mm
75x75 cm - 29 ¹ / ₂ "x29 ¹ / ₂ "	\pm 9,5 mm
37,5x75 cm - 14 ³ / ₄ "x29 ¹ / ₂ "	\pm 9,5 mm
60x60 cm - 23 ⁵ / ₈ "x23 ⁵ / ₈ "	\pm 9 mm
30x60 cm - 11 ³ / ₄ "x23 ⁵ / ₈ "	\pm 9 mm

Sizes available in all colors

GRIP

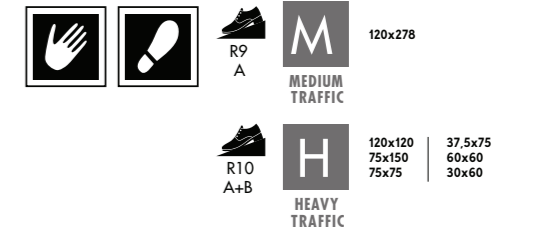
37,5x75 cm - 14 ³ / ₄ "x29 ¹ / ₂ "	\pm 9,5 mm
--	--------------

Size available in all colors

OUTDOOR PAVING \pm 20 mm

120x120 cm - 47 ¹ / ₄ "x47 ¹ / ₄ "	\pm 20 mm
60x120 cm - 23 ⁵ / ₈ "x47 ¹ / ₄ "	\pm 20 mm

Sizes available in all colors




Color-shading




V3 MODERATE
VARIATION
White, Pearl,
Sand, Mud

RAW


Porcelain tile decors

Raw White
Mosaico Castle ± 6 mm * 
29x29,2 cm - 11³/₈"x11³/₈"




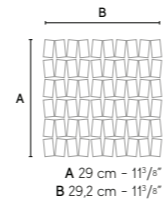
Raw Pearl
Mosaico Castle ± 6 mm * 
29x29,2 cm - 11³/₈"x11³/₈"



Raw Sand
Mosaico Castle ± 6 mm * 
29x29,2 cm - 11³/₈"x11³/₈"



Raw Mud
Mosaico Castle ± 6 mm * 
29x29,2 cm - 11³/₈"x11³/₈"



Raw White
Mosaico Esagono
35,2x30,5 cm - 13⁷/₈"x12"



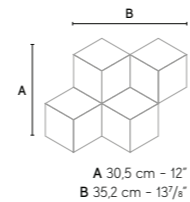
Raw Pearl
Mosaico Esagono
35,2x30,5 cm - 13⁷/₈"x12"



Raw Sand
Mosaico Esagono
35,2x30,5 cm - 13⁷/₈"x12"



Raw Mud
Mosaico Esagono
35,2x30,5 cm - 13⁷/₈"x12"



Raw White
Mosaico Matt
30x30 cm - 11³/₄"x11³/₄"



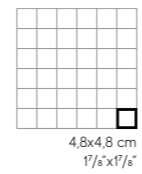
Raw Pearl
Mosaico Matt
30x30 cm - 11³/₄"x11³/₄"




Raw Sand
Mosaico Matt
30x30 cm - 11³/₄"x11³/₄"



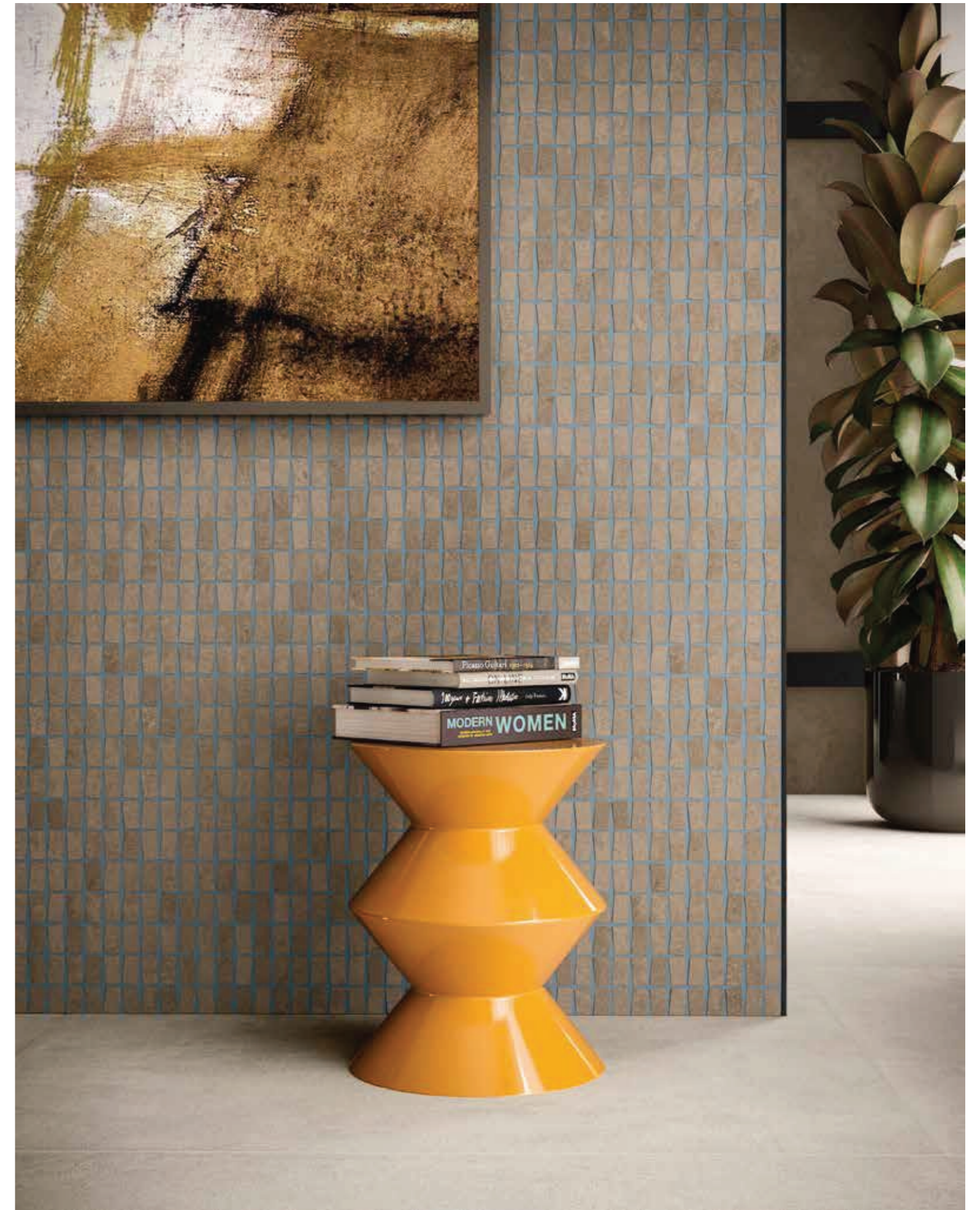
Raw Mud
Mosaico Matt
30x30 cm - 11³/₄"x11³/₄"



 The decoration can only be laid on the wall.

* These mosaics allow you to customize a wall by choosing the color of the grout during the laying phase. The colors presented in these pages are mood suggestions and purely indicative.

For the best performance of the mosaic we recommend the use of epoxy mortars (class RG - EN 13888/ISO 13007) or decorative resins-cement, following the manufacturer's instructions.



RAW

Wall tiles

WHITEBODY WALL TILES - RECTIFIED MONOCALIBER

Sizes and surfaces

MATTE

50x110 cm - 19⁵/₈"x43¹/₄" ± 8,5 mm
 Size available in all colors



Raw White
 50x110 cm - 19⁵/₈"x43¹/₄"



Raw Pearl
 50x110 cm - 19⁵/₈"x43¹/₄"



Raw Sand
 50x110 cm - 19⁵/₈"x43¹/₄"



3D WALL TILES

50x110 cm - 19⁵/₈"x43¹/₄" ± 10 mm 3D Scratch
 > White, Pearl, Blue, Petroleum

Raw Blue
 50x110 cm - 19⁵/₈"x43¹/₄"



Raw Rose
 50x110 cm - 19⁵/₈"x43¹/₄"



Raw Petroleum
 50x110 cm - 19⁵/₈"x43¹/₄"



Color-shading



V2 SLIGHT VARIATION
 White, Pearl, Sand, Blue, Rose, Petroleum

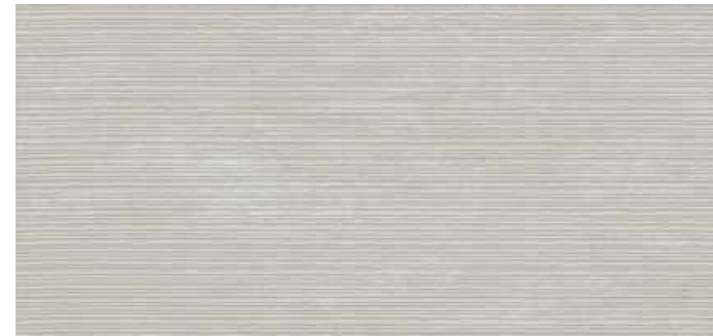
RAW

Wall tiles

Raw 3D Scratch White - 50x110 cm - 19⁵/₈"x43¹/₄"



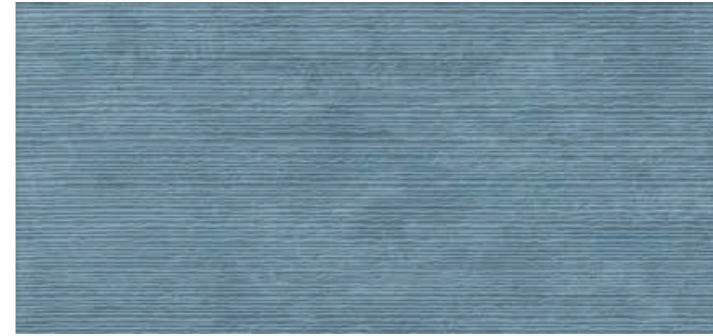
Raw 3D Scratch Pearl - 50x110 cm - 19⁵/₈"x43¹/₄"



Raw 3D Scratch Petroleum - 50x110 cm - 19⁵/₈"x43¹/₄"



Raw 3D Scratch Blue - 50x110 cm - 19⁵/₈"x43¹/₄"



Wall tile decors

Raw Pearl Gold - 50x110 cm - 19⁵/₈"x43¹/₄" ♦



Raw Sand Gold - 50x110 cm - 19⁵/₈"x43¹/₄" ♦



Raw Blue Gold - 50x110 cm - 19⁵/₈"x43¹/₄" ♦



♦ Contains gold. The use of a common mild detergent is recommended. Avoid using acidic or alkaline products, waxes, steel wool, or abrasives.

RAW

Wall tile decors

Raw White Mosaico Twist *
35,8x31 cm - 14¹/₈"x12¹/₄"



Raw Pearl Mosaico Twist *
35,8x31 cm - 14¹/₈"x12¹/₄"



Raw Sand Mosaico Twist *
35,8x31 cm - 14¹/₈"x12¹/₄"



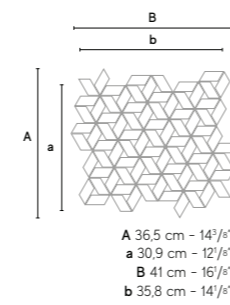
Raw Blue Mosaico Twist *
35,8x31 cm - 14¹/₈"x12¹/₄"



Raw Rose Mosaico Twist *
35,8x31 cm - 14¹/₈"x12¹/₄"



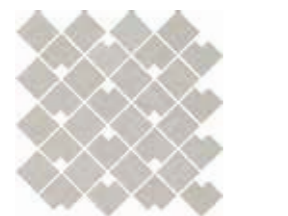
Raw Petroleum Mosaico Twist *
35,8x31 cm - 14¹/₈"x12¹/₄"



Raw White Mosaico Block *
28x28 cm - 11"x11"



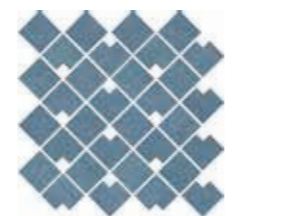
Raw Pearl Mosaico Block *
28x28 cm - 11"x11"



Raw Sand Mosaico Block *
28x28 cm - 11"x11"



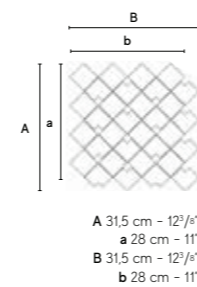
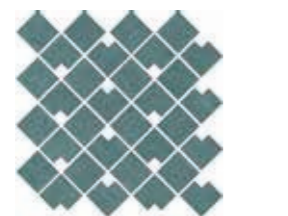
Raw Blue Mosaico Block *
28x28 cm - 11"x11"



Raw Rose Mosaico Block *
28x28 cm - 11"x11"



Raw Petroleum Mosaico Block *
28x28 cm - 11"x11"



Raw White Mosaico Flag *
31,1x31,6 cm - 12¹/₄"x12¹/₂"



Raw Pearl Mosaico Flag *
31,1x31,6 cm - 12¹/₄"x12¹/₂"



Raw Sand Mosaico Flag *
31,1x31,6 cm - 12¹/₄"x12¹/₂"



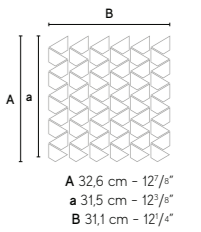
Raw Blue Mosaico Flag *
31,1x31,6 cm - 12¹/₄"x12¹/₂"



Raw Rose Mosaico Flag *
31,1x31,6 cm - 12¹/₄"x12¹/₂"



Raw Petroleum Mosaico Flag *
31,1x31,6 cm - 12¹/₄"x12¹/₂"



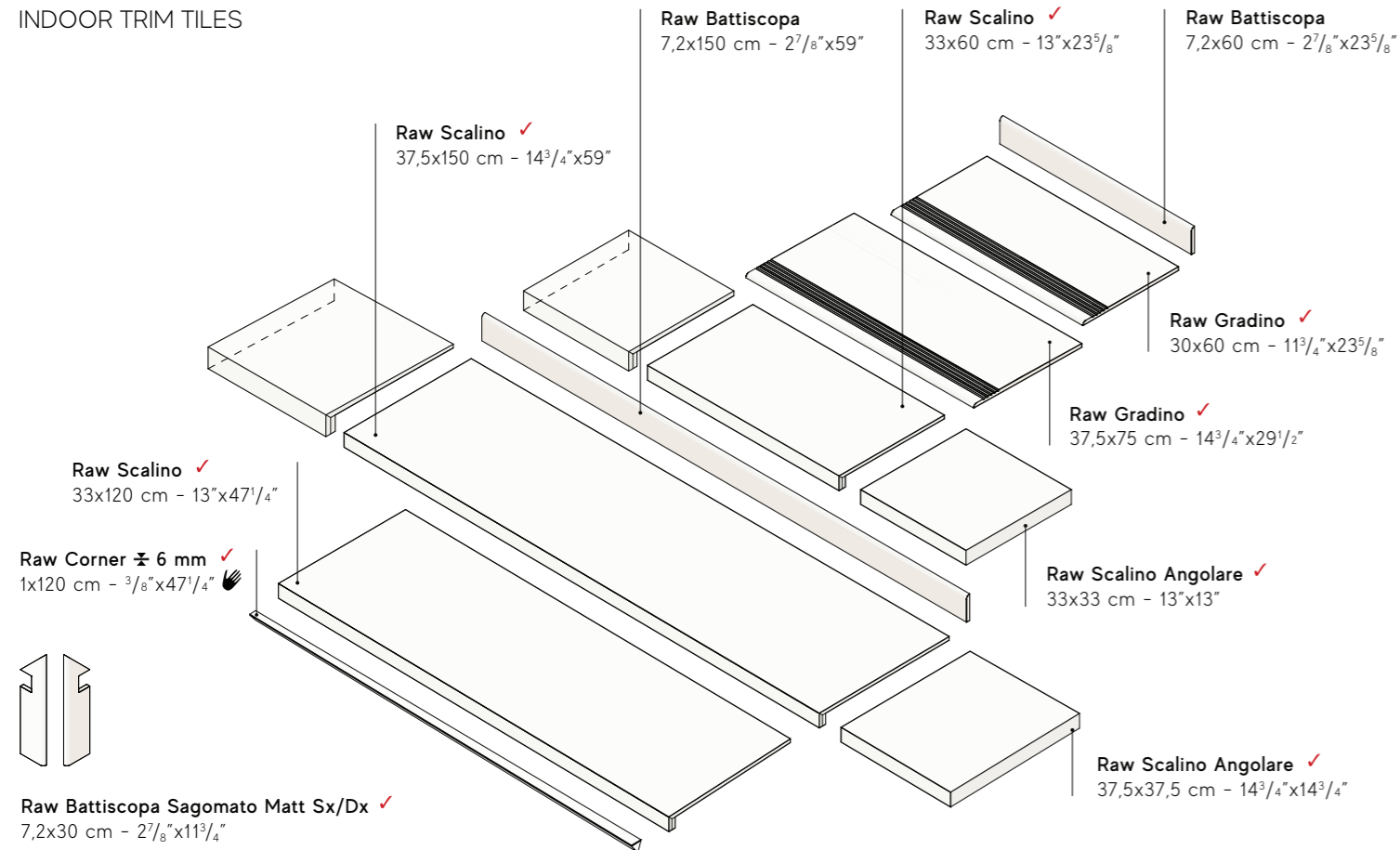
* These mosaics allow you to customize a wall by choosing the color of the grout during the laying phase. The colors presented in these pages are mood suggestions and purely indicative.

* For the best performance of the mosaic we recommend the use of epoxy mortars (class RG - EN 13888/ISO 13007) or decorative resins-cement, following the manufacturer's instructions.

RAW

Porcelain trim tiles

INDOOR TRIM TILES



Raw Corner A.E. ± 6 mm ✓ 1x1 cm - 3³/₈"x3³/₈"

✓ These parts are supplied to order

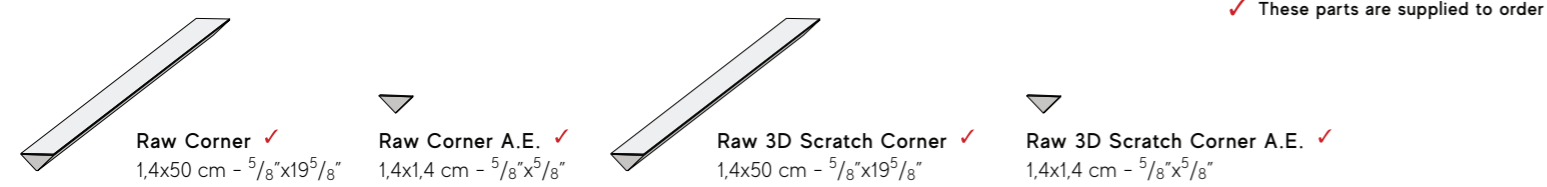
Outdoor trim tiles ± 20 mm



Available in

- Right-left angular elements are available
- ✓ These parts are supplied to order

Wall trim tiles



Ceramic and porcelain tiles: a safe choice

Resistance and duration

Easy to maintain



Porcelain tiles do not require any special maintenance.

UV Resistant



Porcelain tiles maintain their colors even when exposed to continuous, direct sunlight or in contact with atmospheric agents or smog.

Scratch resistant



Porcelain tiles do not splinter, break or get damaged.

Easy to clean



Porcelain tiles are easy to clean.

Stain resistant



Porcelain tiles are waterproof, no liquid can damage the surface.

Resistant to chemicals



Porcelain tiles do not stain and resist the most aggressive chemical agents.

Resistant to acids



Porcelain tiles are resistant to acids found in food and cleaning products.

Resistant to thermal shock



A porcelain tile floor will not change as a result of sharp temperature fluctuations.

Waterproof



Porcelain tiles are completely non-porous and therefore are not damaged by water or humidity.

Frost resistant



Porcelain tiles are frost resistant and therefore are not damaged by low temperatures.

Health

Zero VOCs



Porcelain tiles are intrinsically inorganic and do not emit volatile organic compounds (VOC).

Zero PVC



Porcelain tiles contain no PVC, plastics or petroleum derivatives.

Zero formaldehyde



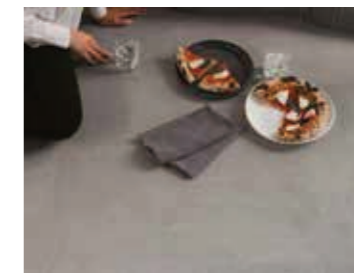
Porcelain tiles do not contain formaldehyde.

Zero allergens



Porcelain tiles are inhospitable for mites, bacteria, fungi, molds, and other irritants.

Prevent bacterial growth



Porcelain tiles are completely hygienic and inhospitable for bacteria, mites, molds, and fungi.

Safety

Non-slip



Porcelain tile surfaces can be made with an abrasive surface grit that can increase traction and reduce the risk of slipping.

Fire resistant



Porcelain tiles are not flammable, reduce the spread of flames, do not burn, and do not emit toxic fumes.

Heat resistant



Porcelain tiles do not change shape at high temperatures.

Environment

Energy efficiency



The high thermal inertia of porcelain tiles moderates the changes in temperature of the rooms, favoring energy savings.

Ecological



Porcelain tiles have a low environmental impact at all stages of their production, from the raw materials to disposal and recycling.

Recycling and re-use



Porcelain tiles are made with recycled materials, last a long time, and can be re-used because they retain their original appearance.

Ideal for floor heating systems



Porcelain tiles can be effectively combined with floor heating systems.



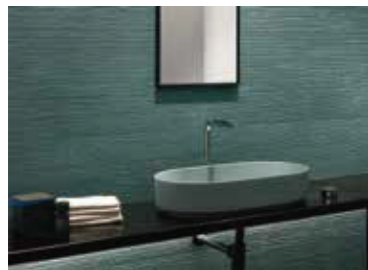
WWW.BRICK.COM

888-265-4525

Wall tiles additional benefits



Ease of installation



Cuts, holes, and bevels are easily made and reduce the time it takes to lay the white body tiles.

Extremely easy to clean



White body ceramic tiles can be cleaned with a simple passage of hot water or neutral detergent.

While porcelain tiles are ideal for use on the floor thanks to their hardness and extreme durability, the light weight and workability of white body tiles make them ideal for use on walls: cuts and holes can be made quickly and easily, reducing installation time and costs.



White-body wall tiles - Rectified monocaliber



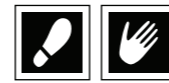
Compliant with standards EN 14411 annex L group BIII
Compliant with standards ISO 13006 annex L group BIII

50x110 cm - 19 5/8" x 43 1/4" ± 8,5 mm
50x110 cm - 19 5/8" x 43 1/4" ± 10 mm 3D Scratch

Technical features	Test Method	Requirements for nominal size N		
		7 cm ≤ N < 15 cm (mm)	N ≥ 15 cm (%) (mm)	
Length and width	ISO 10545-2	± 0,75 ^(*)	± 0,5 ^(*)	± 2,0 ^(*)
Thickness		± 0,5 ^(**)	± 10 ^(**)	± 0,5 ^(**)
Straightness of sides		± 0,5 ^(***)	± 0,3 ^(***)	± 1,5 ^(***)
Rectangularity		± 0,75 ^(****)	± 0,5 ^(****)	± 2,0 ^(****)
Surface flatness	ISO 10545-2	c.c. + 0,75 - 0,50	c.c. + 0,5 - 0,3	c.c. + 2,0 - 1,5
		e.c. + 0,75 - 0,50	e.c. + 0,5 - 0,3	e.c. + 2,0 - 1,5
		w. ± 0,75	w. ± 0,5	w. ± 2,0
Water absorption (in% by mass)	ISO 10545-3	Average >10%. When the average > 20%, this shall be indicated. Individual value > 9%		
Breaking strength Modulus of rupture	ISO 10545-4	S ≥ 600 N		
		R ≥ 15 N/mm ²		
Coefficient of thermal linear expansion	ISO 10545-8	Declared value		
Thermal shock resistance	ISO 10545-9	Pass according to EN ISO 10545-1		
Moisture expansion (in mm/m)	ISO 10545-10	Declared value		
Crazing resistance	ISO 10545-11	Pass according to EN ISO 10545-1		
Bond strength/adhesion for improved cementitious adhesives	EN 1348	Declared value		
Reaction to fire	-	Class A1		
Resistance to household chemicals and swimming pool salts Resistance to low concentrations of acids and alkalis Resistance to high concentrations of acids and alkalis	ISO 10545-13	Minimum Class B		
		Declared Class		
		Declared Class		
Resistance to staining, for unglazed tiles	ISO 10545-14	Minimum Class 3		
Release of dangerous substances: Cadmium (in mg/dm ²) and Lead (in mg/dm ²)	ISO 10545-15	Declared value		

^(*) The permissible deviation, in % or mm, of the average size for each tile (2 or 4 sides) from work size (WS).
^(**) The permissible deviation, in % or mm, of the average thickness for each tile from the work size thickness (WS).
^(***) The maximum permissible deviation from straightness, in % or mm, related to the corresponding work sizes (WS).
^(****) The maximum permissible deviation from rectangularity, in % or mm, related to the corresponding work sizes (WS).
c.c. The maximum permissible deviation from centre curvature, in % or mm, related to diagonal calculated from the work sizes (WS).
e.c. The maximum permissible deviation from edge curvature, in % or mm, related to the corresponding work sizes (WS).
w. The maximum permissible deviation from warpage, in % or mm, related to diagonal calculated from the work sizes (WS).

Coloured body porcelain tiles - Rectified monocaliber



Compliant with standards EN 14411 annex G group BII
Compliant with standards ISO 13006 annex G group BII

120x278 cm - 47 1/4" x 109 1/2" ± 6 mm
120x120 cm - 47 1/4" x 47 1/4" ± 9 mm
75x150 cm - 29 1/2" x 59" ± 9,5 mm
75x75 cm - 29 1/2" x 29 1/2" ± 9,5 mm
37,5x75 cm - 14 7/8" x 29 1/2" ± 9,5 mm
60x60 cm - 23 3/8" x 23 3/8" ± 9 mm
30x60 cm - 11 7/8" x 23 3/8" ± 9 mm
120x120 cm - 47 1/4" x 47 1/4" ± 20 mm
60x120 cm - 23 3/8" x 47 1/4" ± 20 mm

Technical features	Test Method	Requirements for nominal size N		
		7 cm N < 15 cm (mm)	N ≥ 15 cm (%) (mm)	
Length and width	ISO 10545-2	± 0,9 ^(*)	± 0,6 ^(*)	± 2,0 ^(*)
Thickness		± 0,5 ^(**)	± 5 ^(**)	± 0,5 ^(**)
Straightness of sides		± 0,75 ^(***)	± 0,5 ^(***)	± 1,5 ^(***)
Rectangularity		± 0,75 ^(****)	± 0,5 ^(****)	± 2,0 ^(****)
Surface flatness	ISO 10545-2	c.c. ± 0,75	c.c. ± 0,5	c.c. ± 2,0
		e.c. ± 0,75	e.c. ± 0,5	e.c. ± 2,0
		w. ± 0,75	w. ± 0,5	w. ± 2,0
Water absorption (in% by mass)	ISO 10545-3	E _v ≤ 0,5% Individual Maximum 0,6%		
	ASTM C373-18	Requirement ANSI A137.1-2017 Water absorption max ≤ 0,5%		
Breaking strength Modulus of rupture	ISO 10545-4	S ≥ 700N (for thickness < 7,5 mm - per spessore < 7,5 mm) S ≥ 1300N (for thickness ≥ 7,5 mm - per spessore ≥ 7,5 mm)		
		R ≥ 35 N/mm ²		
Bending strength and breaking load	EN 1339 Annex F	-		
Impact resistance, as coefficient of restitution	ISO 10545-5	Declared value		
Mohs hardness	EN 101	-		
Resistance to deep abrasion of unglazed tiles (removed volume)	ISO 10545-6	≤ 175 mm ³		
Coefficient of thermal linear expansion	ISO 10545-8	Declared value		
Thermal shock resistance	ISO 10545-9	Pass according to EN ISO 10545-1		
Moisture expansion (in mm/m)	ISO 10545-10	Declared value		
Frost resistance	ISO 10545-12	Pass according to EN ISO 10545-1		
Bond strength/adhesion for improved cementitious adhesives	EN 1348	Declared value		
Reaction to fire	-	Class A1 or A1 _{fl}		
Resistance to household chemicals and swimming pool salts Resistance to low concentrations of acids and alkalis Resistance to high concentrations of acids and alkalis	ISO 10545-13	Minimum Class B		
		Declared Class		
		Declared Class		
Resistance to staining, for unglazed tiles	ISO 10545-14	Declared Class		
Shod Ramp Test	DIN 51130	Declared value		
Barefoot Ramp Test	DIN 51097	Declared value		
	BS 7976	PTV ≥ 36 classifies the surface as "low slip risk"		
	AS 4586	Declared Classification of the new pedestrian surface materials according to the Pendulum Test		
Pendulum Friction Test	UNE-ENV 12633	Declared value		
	B.C.R.A. Rep. CEC/81	D. M. 236/89 del 14/06/89 μ > 0,40 per elemento scivolante cuoio su pavimentazione asciutta μ > 0,40 per elemento scivolante gomma dura su pavimentazione bagnata		
Coefficient of friction (COF)	ANSI A137.1	ANSI A.137.1-2017 Requires a minimum value of 0.42 for level interior space expected to be walked upon when wet. (3)		
Dynamic coefficient of friction (DCOF)	ANSI A137.1	ANSI A.137.1-2017 Requires a minimum value of 0.42 for level interior space expected to be walked upon when wet. (3)		

^(*) The permissible deviation, in % or mm, of the average size for each tile (2 or 4 sides) from work size (WS).
^(**) The permissible deviation, in % or mm, of the average thickness for each tile from the work size thickness (WS).
^(***) The maximum permissible deviation from straightness, in % or mm, related to the corresponding work sizes (WS).
^(****) The maximum permissible deviation from rectangularity, in % or mm, related to the corresponding work sizes (WS).
c.c. The maximum permissible deviation from centre curvature, in % or mm, related to diagonal calculated from the work sizes (WS).
e.c. The maximum permissible deviation from edge curvature, in % or mm, related to the corresponding work sizes (WS).
w. The maximum permissible deviation from warpage, in % or mm, related to diagonal calculated from the work sizes (WS).
(1). Determination of slip resistance of pedestrian surfaces; it does not cover sports surfaces and road surfaces for vehicles (skid resistance).
(2). Anti-slip performance is guaranteed at the time of delivery of the product.
(3). However, tiles with a DCOF of 0.42 or greater are not necessarily suitable for all projects. The specifier shall determine tiles appropriate for specific project conditions, considering by way of example, but not in limitation, type of use, traffic, expected contaminants, expected maintenance, expected wear, and manufacturers' guidelines and recommendations.
(4). For further details, please refer to outdoor design general catalogue.
(5). Only for products with 20 mm thickness.
(●). PTV ≥ 36 Wet on demand
(●●). P3 on demand
(●●●). C2 on demand

Porcelain tiles			
Matte	Matte 120x278 ± 6 mm	Grip	Outdoor paving ± 20 mm
± 0,3% ± 1,0 mm	± 0,3% ± 1,0 mm	± 0,3% ± 1,0 mm	± 0,3% ± 1,0 mm
± 5,0% ± 0,5 mm	± 5,0% ± 0,5 mm	± 5,0% ± 0,5 mm	± 5,0% ± 0,5 mm
± 0,3% ± 0,8 mm	± 0,3% ± 0,8 mm	± 0,3% ± 0,8 mm	± 0,3% ± 0,8 mm
± 0,3% ± 1,5 mm	± 0,3% ± 1,5 mm	± 0,3% ± 1,5 mm	± 0,3% ± 1,5 mm
± 0,4% ± 1,8 mm	± 0,4% ± 1,8 mm	± 0,4% ± 1,8 mm	± 0,4% ± 1,8 mm
≤ 0,1 %	≤ 0,1 %	≤ 0,1 %	≤ 0,1 %
≤ 0,5 %	≤ 0,5 %	≤ 0,5 %	≤ 0,5 %
S ≥ 1500 N R ≥ 40 N/mm ²	S ≥ 1000 N R ≥ 40 N/mm ²	S ≥ 1500 N R ≥ 40 N/mm ²	S ≥ 10000 N R ≥ 45 N/mm ²
-	-	-	≥ T11 120x120, ≥ U4 60x120
≥ 0,55	≥ 0,55	≥ 0,55	≥ 0,55
6	6	8	8
≤ 150 mm ³	≤ 150 mm ³	≤ 150 mm ³	≤ 150 mm ³
≤ 7MK ⁻¹	≤ 7MK ⁻¹	≤ 7MK ⁻¹	≤ 7MK ⁻¹
Resistant	Resistant	Resistant	Resistant
≤ 0,01% (0,1mm/m)	≤ 0,01% (0,1mm/m)	≤ 0,01% (0,1mm/m)	≤ 0,01% (0,1mm/m)
Resistant	Resistant	Resistant	Resistant
≥ 1,0 N/mm ² (Class C2 - EN 12004)	≥ 1,0 N/mm ² (Class C2 - EN 12004)	≥ 1,0 N/mm ² (Class C2 - EN 12004)	≥ 1,0 N/mm ² (Class C2 - EN 12004)
A1 - A1 _{fl}	A1 - A1 _{fl}	A1 - A1 _{fl}	A1 - A1 _{fl}
A	A	A	A
LA	LA	LA	LA
HA	HA	HA	HA
5	5	5	5
R10	R9	R11	R11
A+B	A	A+B+C	A+B+C
≥ 36 Dry ≥ 36 Wet	(●)	≥ 36 Dry ≥ 36 Wet	≥ 36 Dry ≥ 36 Wet
Class P3	(●●)	Class P4	Class P4
Class C2	(●●●)	Class C3	Class C3
> 0,40 Asciutto > 0,40 Bagnato	> 0,40 Asciutto > 0,40 Bagnato	> 0,40 Asciutto > 0,40 Bagnato	> 0,40 Asciutto > 0,40 Bagnato
> 0,42 Wet	> 0,42 Wet	> 0,42 Wet	> 0,42 Wet